



# RCM SPARKS

Impact and achievement

**2023-24**



— —  
R O Y A L  
C O L L E G E  
O F M U S I C

*London*

Sparks Juniors class



# Music without barriers

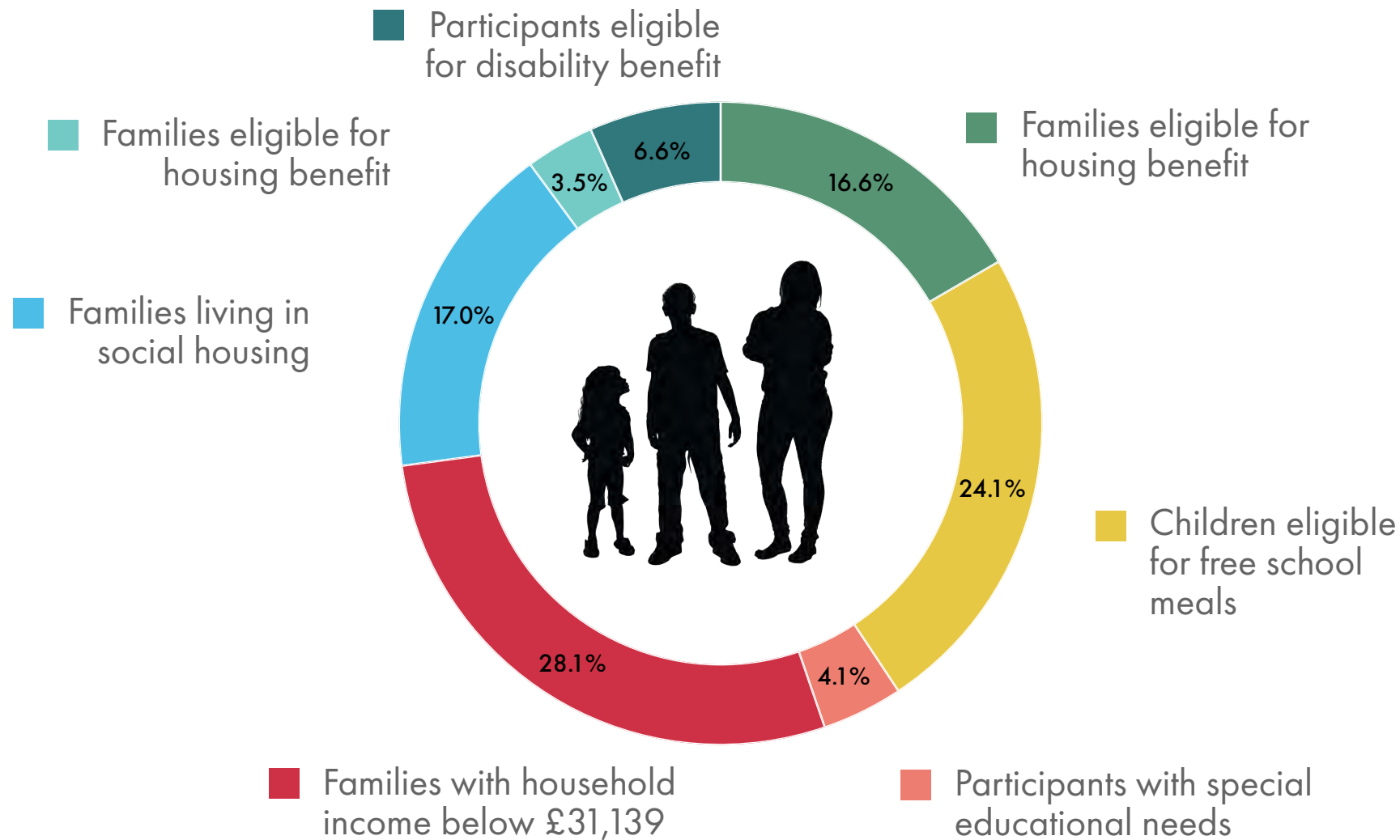
We believe that all young people should be given the chance to engage with live music, to participate, learn and build bonds through creativity and shared experiences.

RCM Sparks provide accessible learning pathways in music by offering funded places for children and young people who are from groups currently underrepresented in higher education.

**84%**  
**OF PARTICIPANTS  
ARE FROM UNDER-  
REPRESENTED  
GROUPS**



# Who are we engaging?





Intro P  
G D  
Chorus 1  
2  
Verse

Explorers Course

# A vibrant new generation of music educators



We train Royal College of Music students in the field of learning and participation, providing relevant and meaningful practical experience.

**150**  
STUDENT  
PLACEMENTS  
FOR **MUSIC**  
EDUCATION  
MODULES

**28**  
WEEKLY  
**MENTORING**  
ROLES

**161**  
STUDENTS  
INVOLVED IN  
**BESPOKE TRAINING**  
AND PRACTICAL  
EXPERIENCES

“

Not only do we get amazing training in action, but we also meet great people and professionals. It's a safe environment for me to practise my leading skills whilst being part of a professional environment.

”

**RCM STUDENT**



Springboard Composition Course





# Creating pathways

## Mini Sparks (ages 0-3)

**36** workshops.

**3** community centre partnerships.

**236** participants at the start of their musical journey.

## Sparks Juniors (ages 5-8)

**85%** from under-represented backgrounds.

**40%** graduated to full RCM Junior Department programme. Other routes include Trinity Laban and Tri-borough Music Hub.

New **5 year** scholarships for **5** children from local state primary schools.

## Get Set Play (ages 6-11)

**60** family members.

**3** first access instruments (bassoon).

**1 year** scholarships for **10** children from local state primary schools for Tri-borough instrumental and vocal learning.

## Explorers (ages 7-12)

**81** participants.

Providing access to the RCM live performance programme and the RCM Museum.

## Springboard Young Composers (ages 14-15)

**10** teens from state secondary schools.

Promoting uptake of GCSE music.



Gender and the Large and Shiny Instruments Course



# Building a pipeline

## Schools activity

We work with schools to increase the quality of musical activity in response to the decline of music education in the state sector.

## Courses

We design activity to support the development of a diverse pipeline of young musicians from the UK progressing to study at Conservatoire level, with a focus on shortage instruments.



**1399**

**SCHOOL CHILDREN  
EXPERIENCED A LIVE  
CONCERT AT  
THE RCM**

**879**

**SCHOOL CHILDREN  
EXPERIENCED AN RCM  
LIVE MUSIC EXPERIENCE  
IN THEIR  
SCHOOL**

**49**

**CHILDREN TOOK  
PART IN THE RCM  
YOUNG BASSOON  
PROGRAMME**

**45**

**FEMALE & NON-BINARY  
PARTICIPANTS  
TOOK PART IN GALSJ  
(GENDER AND THE LARGE AND  
SHINY INSTRUMENTS)**



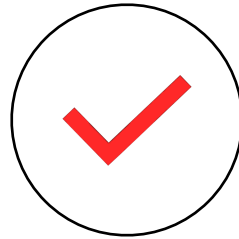
Lunchtime Concert for Schools: RCM Jazz Orchestra

# Working in **partnership**

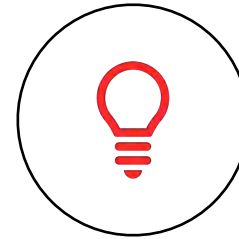
We collaborate with RCM departments (such as the Museum, Creative Careers Centre, Research and Knowledge Exchange) and work externally with arts and educational organisations. We bring together knowledge, expertise and shared resources in order to co-create innovative projects responding to specific needs.



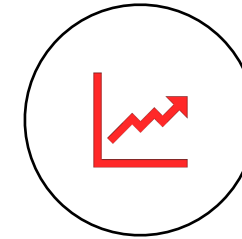
**COLLABORATIVE**



**INTEGRATION OF  
SKILLS AND  
STRENGTHS**



**INNOVATIVE**



**IMPACTFUL**

**leyf**  
Nurseries

**Young  
Sounds**  
UK

**tri-borough  
music hub**

**LONDON  
MUSIC  
FUND**  
PATRON: MAYOR OF LONDON

**groove'n'play**

**TURTLE  
KEYARTS**

**MUSIC  
OF  
LIFE**



“

The best thing about entering into quality collaborations is what and how we learn from each other

”

*Greg Lane, Senior Nursery Manager  
for the Creative Arts, Soho*



**R O Y A L**

**C O L L E G E**

**O F M U S I C**

*London*

For information about how you can  
support RCM Sparks, please contact  
[philanthropy@rcm.ac.uk](mailto:philanthropy@rcm.ac.uk)